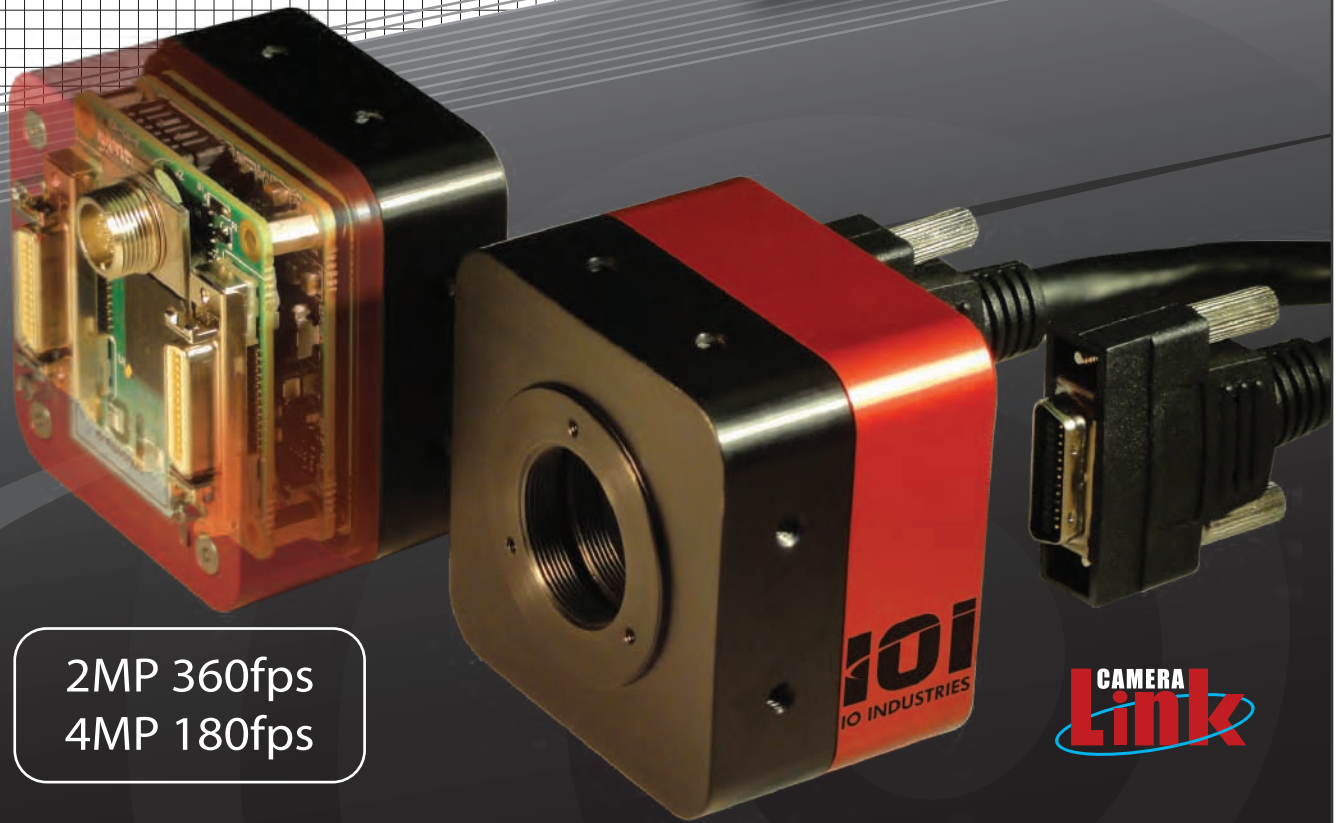


Flare™

High Resolution
Motion Capture



2MP 360fps
4MP 180fps

CAMERA
Link



Features

- Monochrome and color models
- Camera Link output with PoCL support
- Selectable 8-bit or 10-bit pixel depth
- Advanced global shuttering with CDS
- High Dynamic Range modes
- Multiple ROIs and subsampling
- Low power consumption

Applications

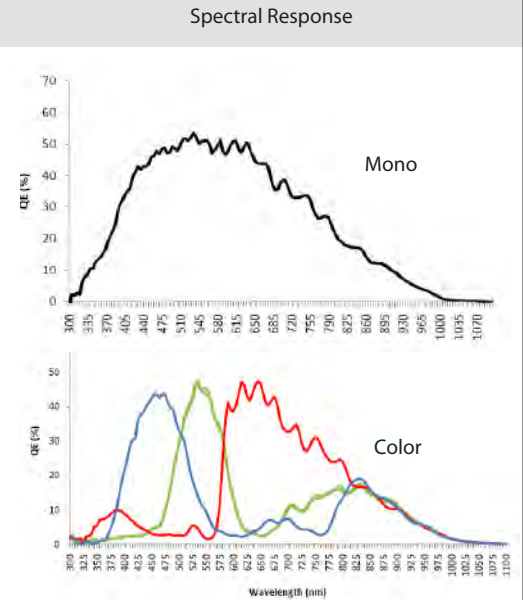
- Inspection and monitoring
- Motion capture
- Research
- Broadcast and cinema

IOi
IO INDUSTRIES

Specifications

Camera Specifications

Camera Model	2M360 - CL	4M180 - CL
Sensor Size (H x V)	2048 x 1088 pixels	2048 x 2048 pixels
Frame Rate (8-bit, full resolution)	340 fps	180 fps
Optical Size	2/3"	1"
Shutter	Pipelined Global Shutter with CDS	
Pixel Size (µm)	5.5 x 5.5	
Sensor Type	60 dB CMOS	
Image Type	Mono / Color (Bayer)	
Pixel Format	8-bit or 10-bit	
Data Output Type (Interface)	Camera Link Base, Medium, Full, or Full 80-bit	
CL Pixel Clock	80 MHz	
CL Tap Geometry	(2x, 3x, 4x, 8x, 10x) 8-bit, (2x, 4x, 8x) 10-bit	
Synchronization	Via external trigger or free-run	
Exposure Control	Trigger width or timed	



Mechanical / Electrical Specifications

Housing Size	63.5 mm x 63.5 mm x 44.1 mm
Ambient Temperature	Up to 50°C
Lens Mount	C- Mount or T-Mount
Ports	(2) MDR 26-pin, (1) 12-pin Hirose
Power Requirements	12 VDC (via Hirose or PoCL)
Power Consumption (typical)	2.5 W
Weight (typical)	310 g

